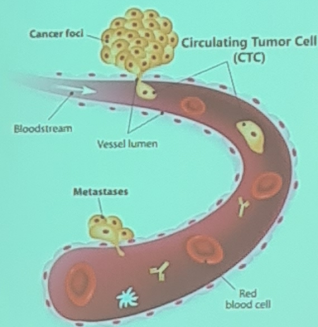


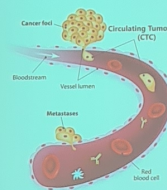
## CIRCULATING TUMOR CELLS(CTC)



- Some Tumoral cells can detach from the main body of the tumor and enter the blood flow
- These Circulating Tumor Cells (CTCs) can subsequently land in other body districts, generating methastases
- CTCs detection can allow the discovery of tumors not easily identifiable in early stages of the disease



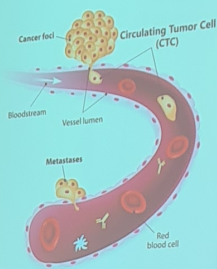
## CIRCULATING TUMOR CELLS(CTC)



- Some Tumoral cells can detach from the main body of the tumor and enter the blood flow
- These Circulating Tumor Cells (CTCs) can subsequently land in other body districts, generating methastases
- CTCs detection can allow the discovery of tumors not easily identifiable in early stages of the disease



## CIRCULATING TUMOR CELLS(CTC)

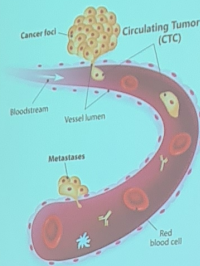


- Some Tumoral cells can detach from the main body of the tumor and enter the blood flow
- These Circulating Tumor Cells (CTCs) can subsequently land in other body districts, generating methastases
- CTCs detection can allow the discovery of tumors not easily identifiable in early stages of the disease





## CIRCULATING TUMOR CELLS(CTC)



- Some Tumoral cells can detach from the main body of the tumor and enter the blood flow
- These Circulating Tumor Cells (CTCs) can subsequently land in other body districts, generating methastases
- CTCs detection can allow the discovery of tumors not easily identifiable in early stages of the disease





## CIRCULATING TUMOR CELLS(CTC)



- Some Tumor cells can detach from the main body of the tumor and enter the blood flow
- These Circulating Tumor Cells (CTCs) can subsequently land in other body districts, generating metastases
- CTCs detection can allow the discovery of tumors not easily identifiable in early stages of the disease















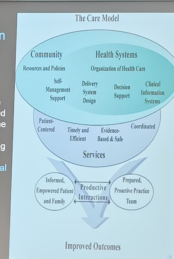






## >> The role of digitalization in health management

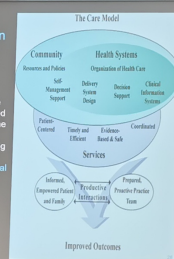
The enabling factor to move from the «reactive medicine» model, structured to address the expressed needs of the patients, toward the «proactive medicine» model, aiming to answering to the not yet expressed needs of healthy people and to reach an optimal management of chronic conditions according to the chronic care model.





## >> The role of digitalization in health management

The enabling factor to move from the «reactive medicine» model, structured to address the expressed needs of the patients, toward the «proactive medicine» model, aiming to answering to the not yet expressed needs of healthy people and to reach an optimal management of chronic conditions according to the chronic care model.

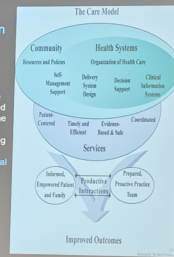






## >> The role of digitalization in health management

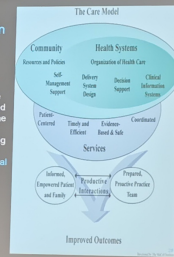
The enabling factor to move from the reactive medicines model, structured to address the expressed needs of the patients, toward the proactive medicines model, aiming to answering to the not yet expressed needs of healthy people and to reach an optimal management of chronic conditions according to the chronic care model.





## >> The role of digitalization in health management

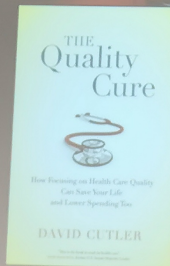
The enabling factor to move from the reactive medicines model, structured to address the expressed needs of the patients, toward the proactive medicines model, aiming to answering to the not yet expressed needs of healthy people and to reach an optimal management of chronic conditions according to the chronic care model.





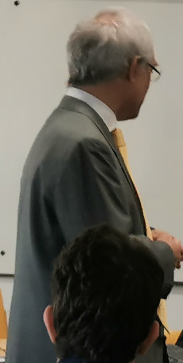


"HEALTH CARE IS AMONG THE MOST INFORMATION-INTENSIVE PROCESSES IN THE ECONOMY. AND YET, THE INFORMATION BASIS ON WHICH HEALTH CARE MAKES THESE DECISIONS IS AMONG THE LEAST SOPHISTICATED OF ANY INDUSTRY IN THE ECONOMY" — DAVID CUTLER HARVARD UNIVERSITY



"HEALTH CARE IS AMONG THE MOST INFORMATION-INTENSIVE PROCESSES IN THE ECONOMY. AND YET, THE INFORMATION BASIS ON WHICH HEALTH CARE MAKES THESE DECISIONS IS AMONG THE LEAST SOPHISTICATED OF ANY INDUSTRY IN THE ECONOMY" — DAVID CUTLER

 HARVARD UNIVERSITY







ALBERGO VOLTA

ISTITUTO TECNICO SUPERIORE

NUOVE TECNOLOGIE DELLA VITA

© 2023 Alberto Steindler  
presidente@itsvolta.it











# The challenging future of AI in Medical Devices

Ilaria Pecorari, PhD  
Cosylab d.d.

XI Spring School  
„IoT, economic and management challenges for e-health integration in  
the enlarged Europe“



# The challenging future of AI in Medical Devices

Ilaria Pecorari, PhD

Cosylab d.d.

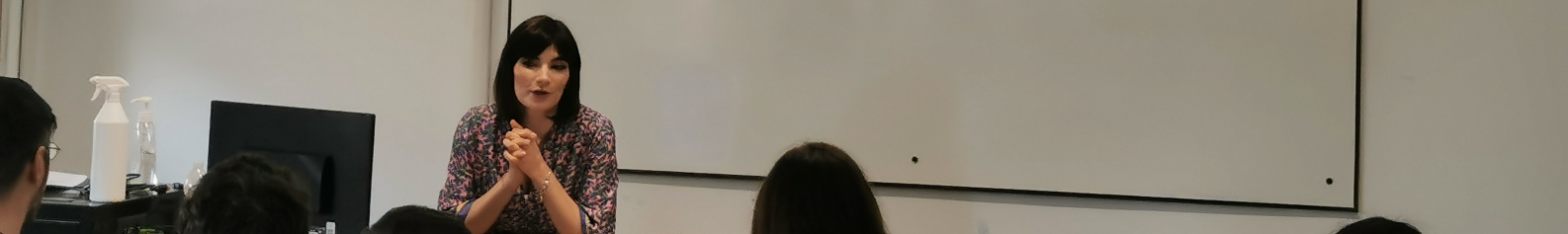
XI Spring School

„IoT, economic and management challenges for e-health integration in  
the enlarged Europe“





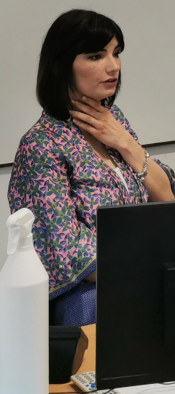






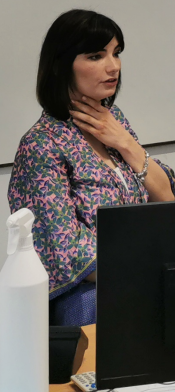
## Challenge: Accountability

- There are multiple actors involved with AI, from developers to healthcare professionals
- There are current gaps in regulation concerning who should be held accountable or liable for errors or failures of AI
- Healthcare professionals are left vulnerable, especially if the AI they are using is not entirely transparent



## Challenge: Accountability

- There are multiple actors involved with AI, from developers to healthcare professionals
- There are current gaps in regulation concerning who should be held accountable or liable for errors or failures of AI
- Healthcare professionals are left vulnerable, especially if the AI they are using is not entirely transparent





## Challenge: Accountability

- There are multiple actors involved with AI, from developers to healthcare professionals
- There are current gaps in regulation concerning who should be held accountable or liable for errors or failures of AI
- Healthcare professionals are left vulnerable, especially if the AI they are using is not entirely transparent

31

## Challenge: Accountability

- There are multiple actors involved with AI, from developers to healthcare professionals
- There are current gaps in regulation concerning who should be held accountable or liable for errors or failures of AI
- Healthcare professionals are left vulnerable, especially if the AI they are using is not entirely transparent

31



  
CENTRAL EUROPEAN INITIATIVE

CEI Cooperation Activity  
XI Spring School

*"IoT, economic and management  
challenges for e-health integration  
in the enlarged Europe"*

 |  UNIVERSITÀ  
DEGLI STUDI  
DI TRIESTE | 









## ECRES project– Personalized system for the prevention of hypoglycemia in T1D during physical activity

